



Bringing measurements within reach



Presenter: James Pardue

303-880-4306

James.Pardue@ikegps.com

spike.ikegps.com

Bringing measurements and GPS location within reach for millions of new users – simply by taking a photo!



Spike is an Award-Winning Solution for Measuring Objects and Collecting GPS Location from a Distance



Spike Solution Overview

- Spike laser device:
 - Robust and lightweight device that attaches to your smartphone or tablet
 - Connects via Bluetooth to the mobile device and Spike app
 - Accurately measures distances to remote objects
- Spike mobile app:
 - Available for free in the Google Play and Apple App stores
 - Allows users to capture measurements from photos, including areas, heights, widths, elevations, distances to targets, and offset GPS locations



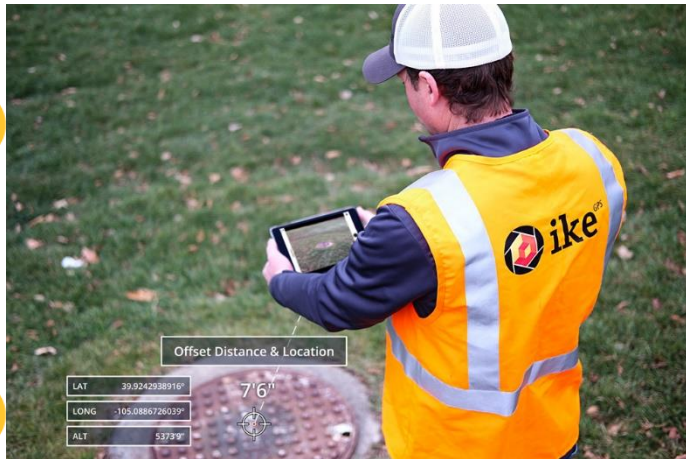
Spike has unique & impactful measurement capabilities

Accessible to any field user that can use a smartphone

#1 Target Distance &

#2 Target Location

- Capture your offset distance to the target when taking the photo & GPS location of mobile device & target



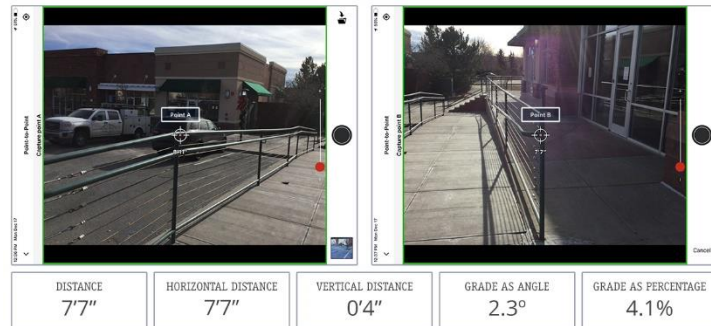
#3 Photo Measure

- Area and linear measurements on the same plane
- +/- 1% accuracy



#4 Point-to-Point

- Measuring the distance between two objects not on the same plane
- +/- 3% accuracy



Spike supports industry-leading software and is compatible with 3rd party GNSS receivers

Software Integrations:



Compatible With:



ikeGPS Vision for Spike

A mega-trend has emerged whereby professionals are seeking to use their smartphone or tablet in more than just a personal context.

In our view, for measurement products, this has translated to:

- An expectation that measurement tools are intuitive to use, are accessible to all the people that need them, and that data can plug into wider mobile applications.
- Businesses and professionals are seeking to leverage the investment they've already made into mobility, taking a modular and multi-tool approach.

Our vision for Spike was to deliver unique measuring capability and to make the system simple to use and accessible to any field worker:

- Taking complex measurements shouldn't necessarily require complicated tools. In fact, it should be as easy as using your smartphone.
- There should be a way to augment the power of a smartphone and tablet, not an attempt to replicate it.

Today, ikeGPS mobile products are relied upon every day by tens of thousands of businesses across construction, engineering, architecture, asset management, facility management, real estate, insurance, government & defense, and other industries.



Ask yourself:

Why Aren't More People Doing Field
Data Collection?

Field data collection is the “Achilles’ Heel” for many GIS professionals...

It can be costly, hard, time-consuming, resource-heavy, and sometimes not safe!



Field Data Collection is Hard.
Make it Easy with Spike & Survey123.



Esri Partner Conference
2019 Award Winner
Improving Field Operations

Spike & Survey123 Solution Overview

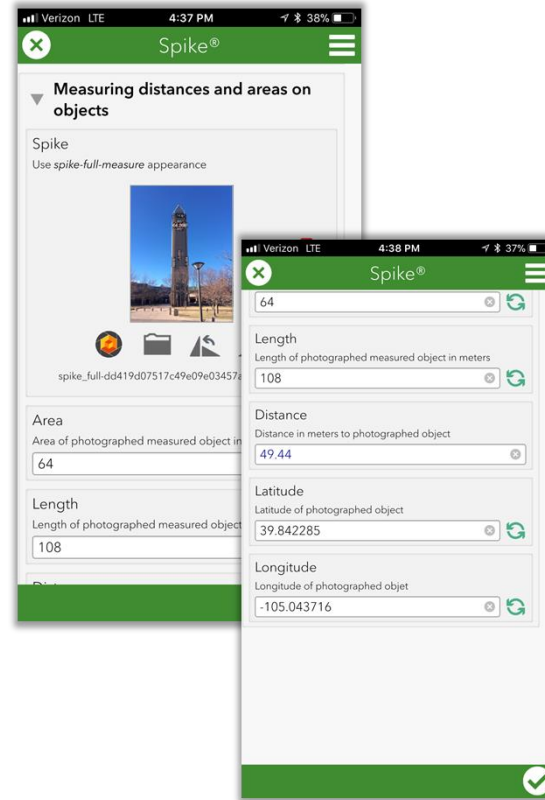

Survey123
for ArcGIS®



Spike



Survey123



ArcGIS

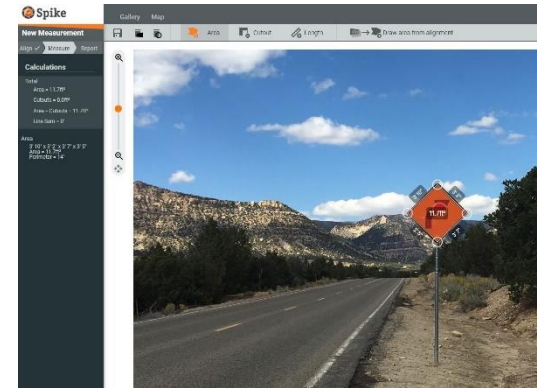
Signage Inventory Case Studies

Carbon County, Utah Sees a Staggering ROI from Collector for ArcGIS and Spike

Spike and Collector used together for signage inventory reduced project costs from \$50k to \$5k, leading to more than a **500% ROI in less than one month**

*“With this new process combining Collector for ArcGIS with Spike, we have been able to **collect, measure, and store our data more efficiently.** Now we can have multiple people collecting and editing data at the same time, and when Campbell’s team is within range of service, be able to **immediately see points added to the map in ArcGIS Online as they are collected.**”*

- Mellissa Lasslo, GIS Specialist, and Daniel Campbell, Road Shop Supervisor with the Carbon County Road Department



We deployed Spike with the Survey123 for ArcGIS® app to measure and collect the dimension of objects, such as our signage and facilities. This joint solution reduces time in the field spent collecting assets, and is easy to operate and highly efficient.

- GIS Applications & Data Services Unit Manager,
Colorado Department of Transportation



Survey123
for ArcGIS®

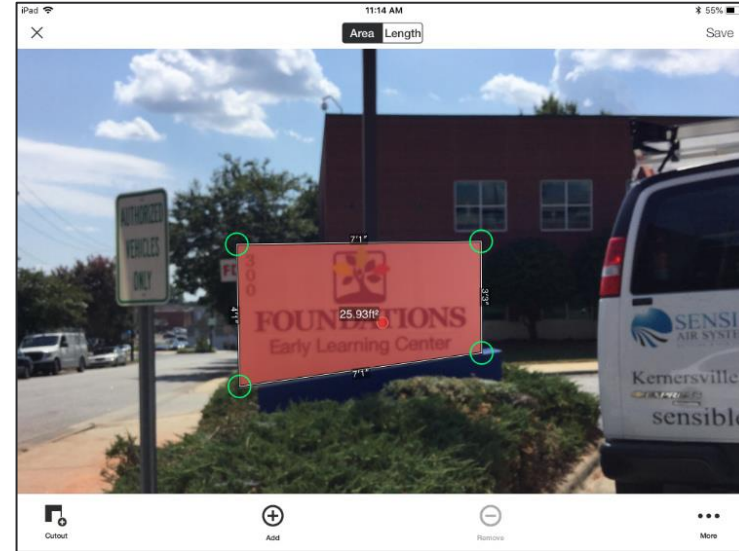


City of Winston-Salem Zoning Team Cuts Costs on Sign Inventory & Compliance

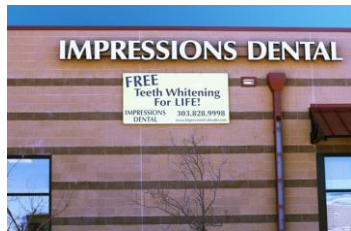
Spike and ArcGIS Online® **Saved the City More than \$200,000** on their signage inventory project

*“The amount of time saved was greater for us because we didn’t have to hire land surveyors to go out and do the work. We also had **tremendous cost savings** by using Spike and using employees rather than an outside vendor, which **could have cost \$200,000-500,000 to inventory every sign in the city.**”*

- Jeff Vaughn, the Zoning Inspection Supervisor with the City of Winston-Salem



Spike is for any application requiring the inspection, assessment and reporting of features



Thousands of Sign & Graphics businesses



Tens of thousands of contractors and construction groups



Defense and intel agencies, such as DIA and SOCOM



Facilities Management



Government and city councils for asset management



Insurance



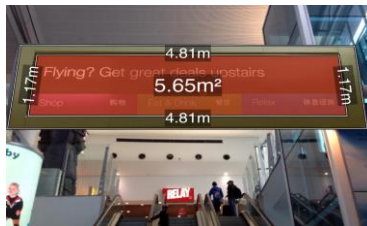
Law Enforcement, for accident investigation



Hundreds of Real Estate and Appraisal companies



Retail



Transportation; >40% of US DOT's



Hundreds of Architecture companies

Questions?

James Pardue

303-880-4306

James.Pardue@ikegps.com

Helpful Resources:

1. Demonstration video of the Spike operations and the integration of Survey123: <https://www.youtube.com/watch?v=82YPfDxGL3Q>
2. Spike Website: <https://spike.ikegps.com/>
3. Spike YouTube Channel: <https://www.youtube.com/channel/UCciHOBqGriqsy05s3xkdiWw>
4. Esri Community Link – Using Spike with Survey123: <https://community.esri.com/t5/arcgis-survey123-blog/using-spike-with-survey123-for-arcgis/ba-p/893528>