

Welcome to the LAR-IAC 3 Status Meeting

March 24, 2011



Agenda

- Welcome & Introduction – LA County
- LAR-IAC3 Status Updates
 - LA County
 - Background
 - Status
 - Participant information
 - Vendor Updates
 - Pictometry (Oblique imagery)
 - Sanborn (Ortho imagery)
 - Dewberry (Independent QA/QC)
 - USGS and LAR-IAC
- Discussion / Other Items / Closing – LA County

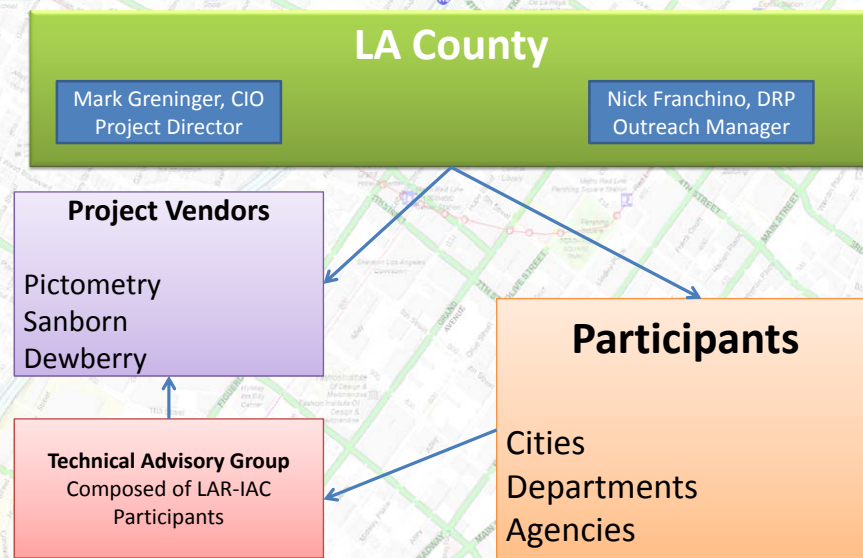
What is LAR-IAC?

- Los Angeles Regional Imagery Acquisition Consortium (LAR-IAC)

“LAR-IAC is multi-jurisdictional purchasing arrangement that enables participating local governments and agencies to benefit from combined economies of scale to efficiently and cost-effectively acquire high definition aerial data.”

- Established in 2003 by LA County DRP and CIO.

LAR-IAC Team Structure



Orthogonal Imagery

- Also known as “Satellite View”

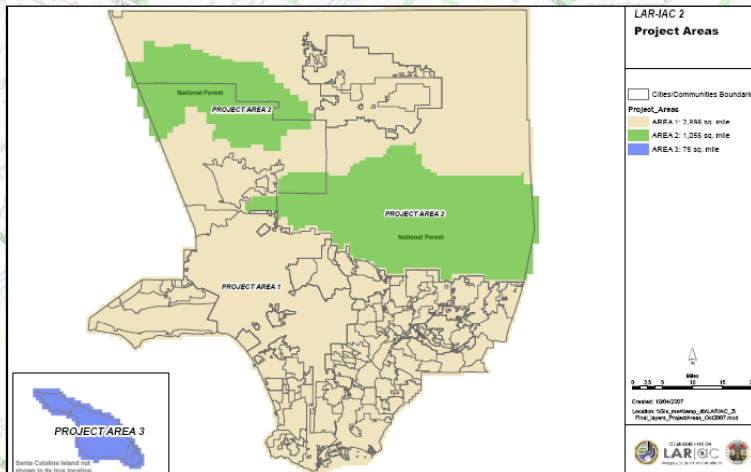


Oblique Imagery

- Also known as “birds eye”



Project Areas - Ortho Imagery



Delivery Mechanisms

- External hard disk with aerial imagery files.
 - 4 Ortho imagery in various formats
 - GeoTIFF (raw) tiles
 - SDE export or File Geodatabase or ESRI image mosaic
 - JPEG2000 (compressed)
 - MrSID compressed (mosaics)
 - ECW compressed (mosaics)
 - 1 Oblique imagery dataset
 - Proprietary JPEG format (medium compression)
 - Updates to Elevation Data
 - GIS Shapefiles, AutoCAD files, Microstation files

Data Delivery Formats

LAR-IAC3

Delivery Product	Format 1	Format 2	Format 3
Digital Terrain Model (Spot Updates)	ArcGIS shapefile - points, 3D lines	AutoCAD (dwg) – points , lines	Microstation (dgn) – points , lines
Orthophoto (color) (4" and 1')	GeoTIFF & JPG2000	SDE Export/File Geodatabase/ESRI Image Mosaic	Mr. Sid & ECW (mosaics)
Pictometry oblique imagery (4" and 1')	Medium Compressed JPG format		

Data Delivery (2)

LAR-IAC3

- Pictometry ArcGIS Desktop
 - ArcMap 10.0 version released.
- Hosted solution(s) for Oblique Imagery
 - **Pictometry Online** for oblique imagery
 - Pictometry Image Navigator for integration into your existing mapping sites.
 - ***Pictometry iPhone application!***

Pictometry online training

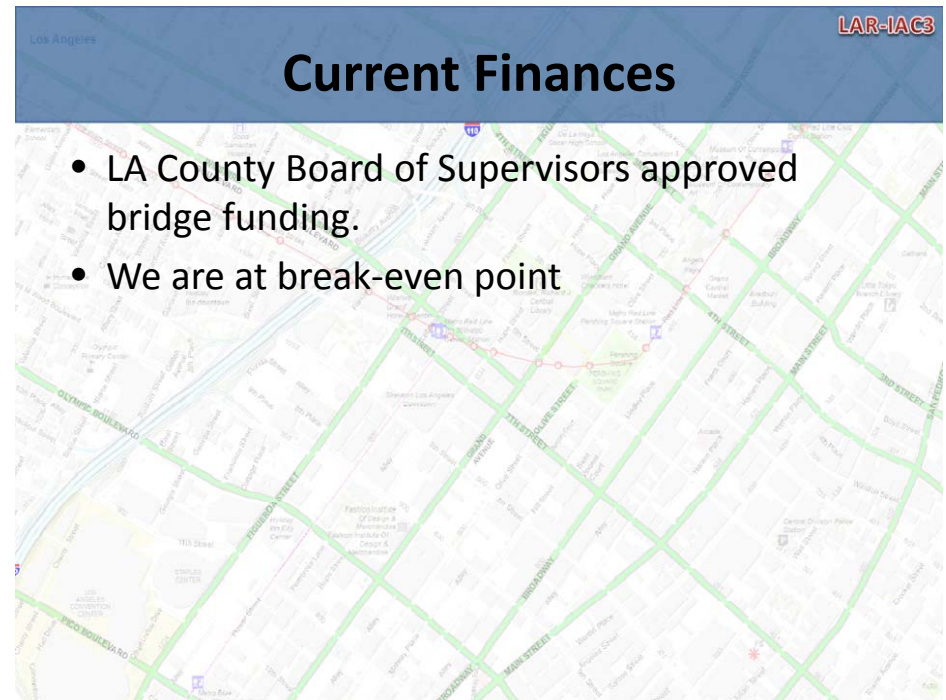
LAR-IAC3

- All from 11 – 12 AM PDT
 - Mon, Mar 28
 - Thu, Apr 14
 - Mon, Apr 25
 - Thu, May 12
 - Mon, May 23
 - Thu, Jun 9
 - Mon, Jun 27
 - Thu, Jul 14
 - Mon, Jul 25
 - Thu, Aug 11
 - Mon, Aug 22
 - Thu, Sep 8
 - Mon, Sep 26

How do I Join?

LAR-IAC3

- Letter of Intent
 - Informs the County that your agency intends to budget for LAR-IAC participation.
 - Non-binding
- Participant Agreement
 - Commits your agency to pay your share of LAR-IAC and “join the team”
 - Can make two payments over two fiscal years (one this year, one next)



LAR-IAC3

Current Participants

Cities	
Agoura Hills	La Habra Heights
Beverly Hills	Lakewood
Burbank	Los Angeles
Carson	Manhattan Beach
Culver City	Pasadena
Downey	San Dimas
Glendale	Santa Clarita
Hermosa Beach	Santa Monica
City of Industry	Torrance
City of Inglewood	Whittier
La Canada Flintridge	

LAR-IAC3

Current Participants

County Departments	
Agricultural Comm./Weights and Measures	Mental Health Department
Assessor	Parks & Recreation
Beaches and Harbors	Probation
CEO OEM	Public Health Administration
Chief Information Office	Public Library
Children and Family Services	Public Social Services
Community and Senior Services	Public Works
Community Development Commission	Regional Planning Department
Fire Department	Registrar-Recorder/County Clerk
Health Services	Sheriff
Internal Services Department	
Other Agencies	
LA County Sanitation Districts	University of Southern California
Santa Catalina Island Conservancy	
US Geological Survey	

Pricing Structure for Education

- Expand funding for LAR-IAC
- Give our future employees training on real data
- Give researchers access to comprehensive data
- Make LA County a hotbed of GIS.

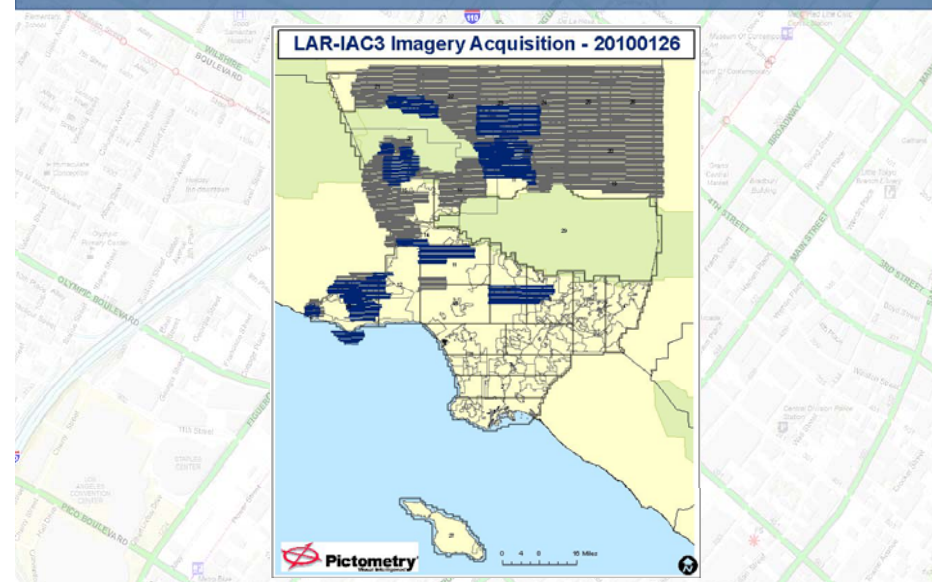
Pricing for Education

- Reduced rate for colleges needing GIS data, to support their education mission
 - \$5,000 for 2 year colleges
 - \$10,000 for 4 year colleges w/o PhD programs
 - \$20,000 for 4 year colleges with PhD programs
- LAR-IAC 1 & LAR-IAC 2 data available for same pricing.
- Contact me or Nick Franchino (outreach manager) for more information

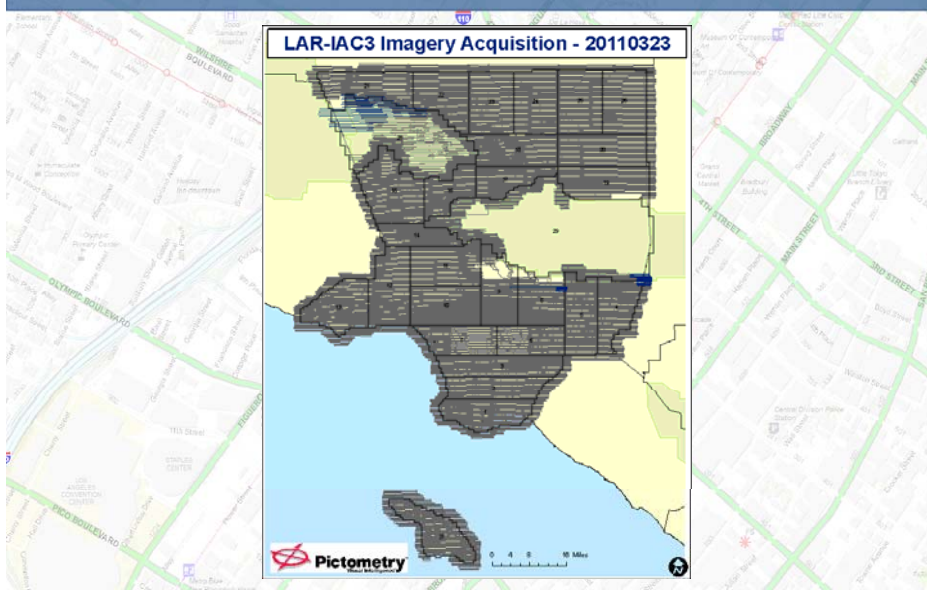
Simplified Schedule

- September – TAG finalizes specifications
- December – set up bridge funding (CIO and CEO)
- December - complete contracts (all firms)
- December - start flying
- **March 2011 - flying completed...start processing**
- April – August - QC underway
- September – December 2011 delivery underway

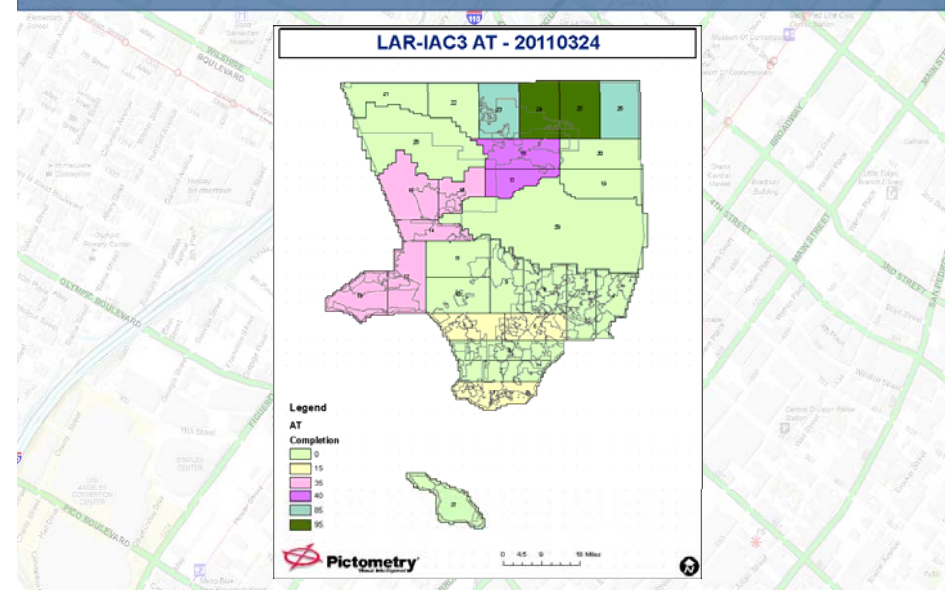
Acquisition Status in January



Acquisition Status in March

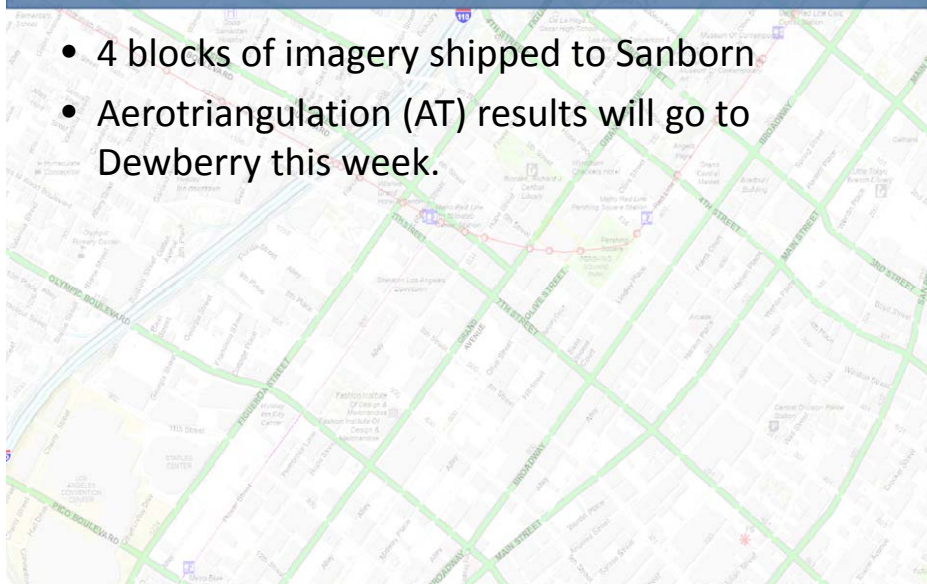


Processing Status



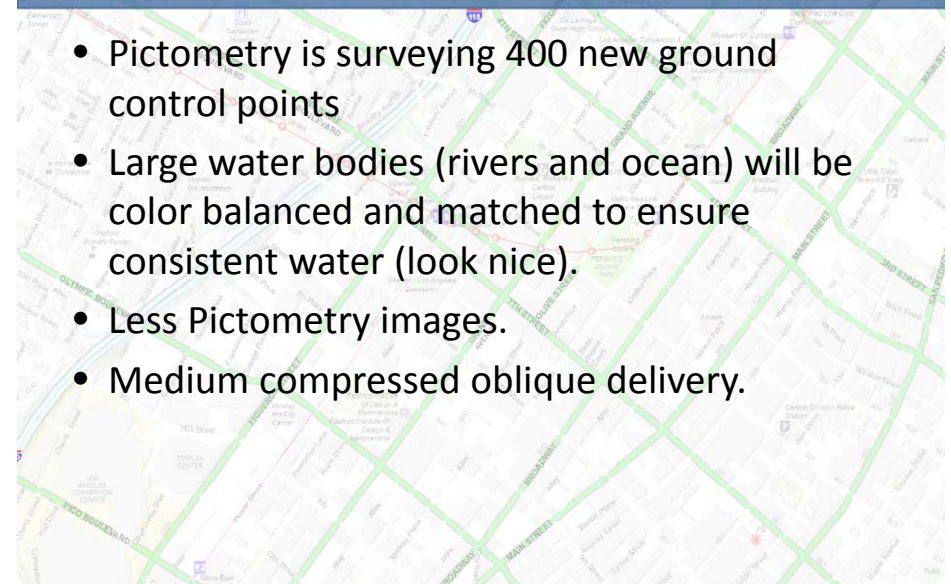
More Status

- 4 blocks of imagery shipped to Sanborn
- Aerotriangulation (AT) results will go to Dewberry this week.



Changes from LAR-IAC 2

- Pictometry is surveying 400 new ground control points
- Large water bodies (rivers and ocean) will be color balanced and matched to ensure consistent water (look nice).
- Less Pictometry images.
- Medium compressed oblique delivery.



Changes from LAR-IAC 2

- Addition of GIS Data to all deliveries:
 - Assessor Parcels with “local roll” information
 - Points of Interest (over 200 categories of information)
 - Land Types (parks, school boundaries, cemeteries...)
 - Administrative Boundaries (flood district boundaries, service planning areas)
 - Political Boundaries (precincts, city boundaries,)
 - Hydrologic Data (rivers, streams, lakes)
- For more information see <http://gis.lacounty.gov/dataportal>

What we need from you now

- **Signed Participant Agreement!**
- Updated contact information
- Shapefiles of locations of major elevation change (grading, etc).
- Email to mgreninger@cio.lacounty.gov

What we need from you later

- **Funding – please prepare to fund your initial payment.**
- Your preferred merged imagery format (pick one) – after the ESRI conference.
 - SDE Export (compressed)
 - File Geodatabase (compressed)
 - ESRI image mosaic (new in version 10.0)

Distribution and Sub-licensing

- Distribution
 - 4-inch orthos can be displayed on the Internet
 - Oblique imagery can be shown on the Internet
 - **Note: measurement tools for internal use only**
 - 1 foot orthos can be distributed to the Public
- Licensing
 - Participant Agreement
 - Sub-licensing
 - One simplified form to cover all data products for sub-contractors

Staying Up-To-Date With Project

- Meetings
 - Briefing Meetings (every other month)
 - Technical Advisory Group (as necessary)
 - User Group Meetings (quarterly)
- Documents
 - Participant Agreement
 - Status Reports

Presentations



- Presentation – **Pictometry** (Oblique imagery)
- Presentation – **Sanborn** (Ortho imagery)
- Presentation – **Dewberry** (Independent QA/QC)

Demonstrations



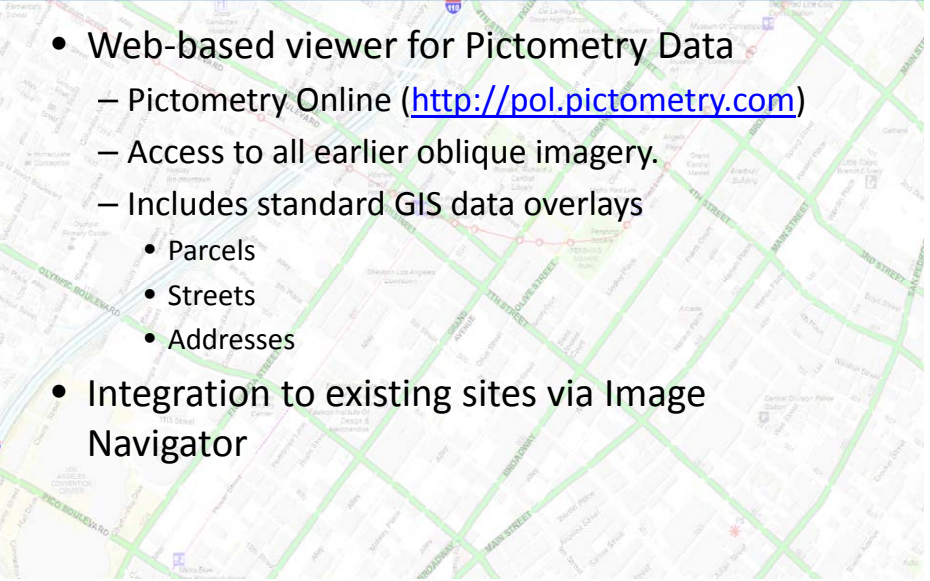
Discussion

- Discussion of LAR-IAC with US Geological Survey (USGS)
 - Drew Decker, USGS

Los Angeles LAR-IAC3

Oblique Hosted Delivery Solutions

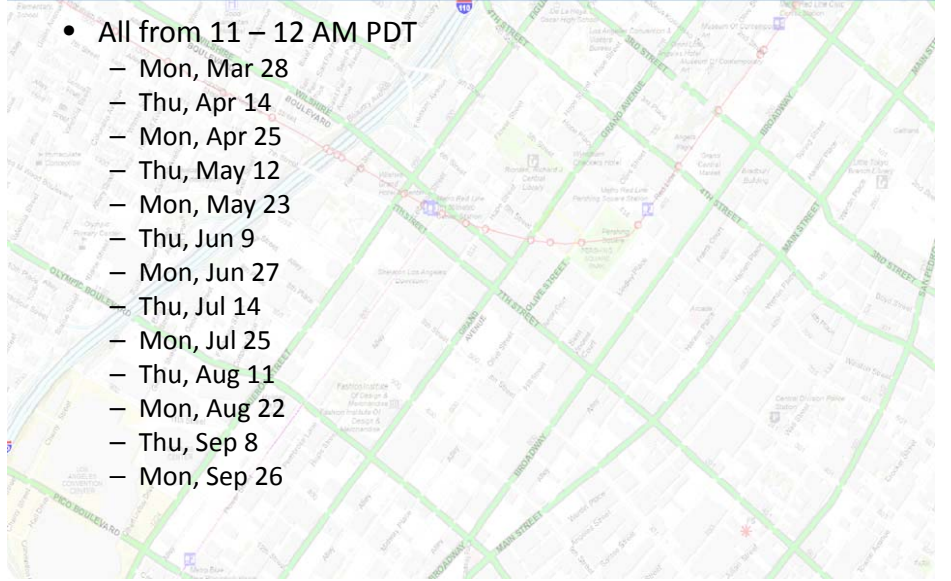
- Web-based viewer for Pictometry Data
 - Pictometry Online (<http://pol.pictometry.com>)
 - Access to all earlier oblique imagery.
 - Includes standard GIS data overlays
 - Parcels
 - Streets
 - Addresses
- Integration to existing sites via Image Navigator



Los Angeles LAR-IAC3

Pictometry online training

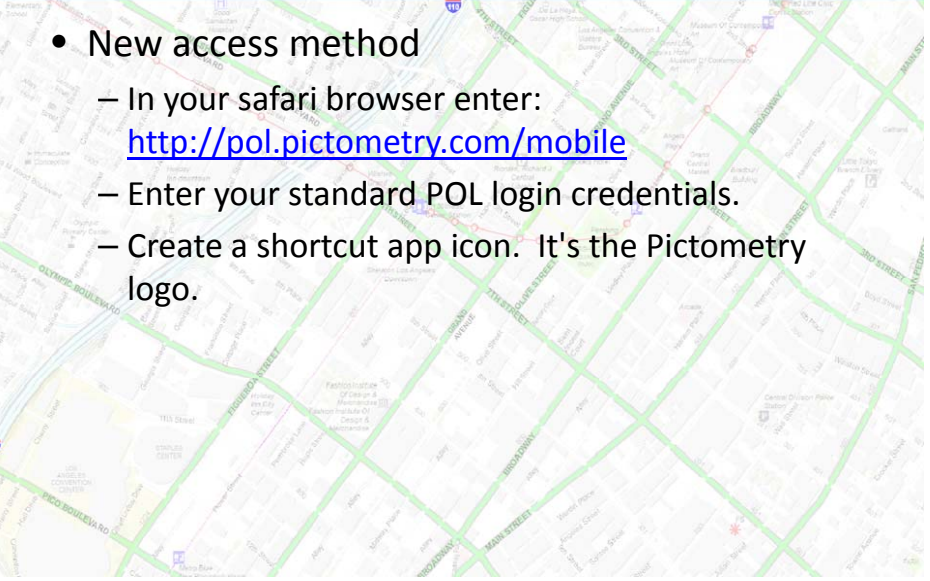
- All from 11 – 12 AM PDT
 - Mon, Mar 28
 - Thu, Apr 14
 - Mon, Apr 25
 - Thu, May 12
 - Mon, May 23
 - Thu, Jun 9
 - Mon, Jun 27
 - Thu, Jul 14
 - Mon, Jul 25
 - Thu, Aug 11
 - Mon, Aug 22
 - Thu, Sep 8
 - Mon, Sep 26



Los Angeles LAR-IAC3

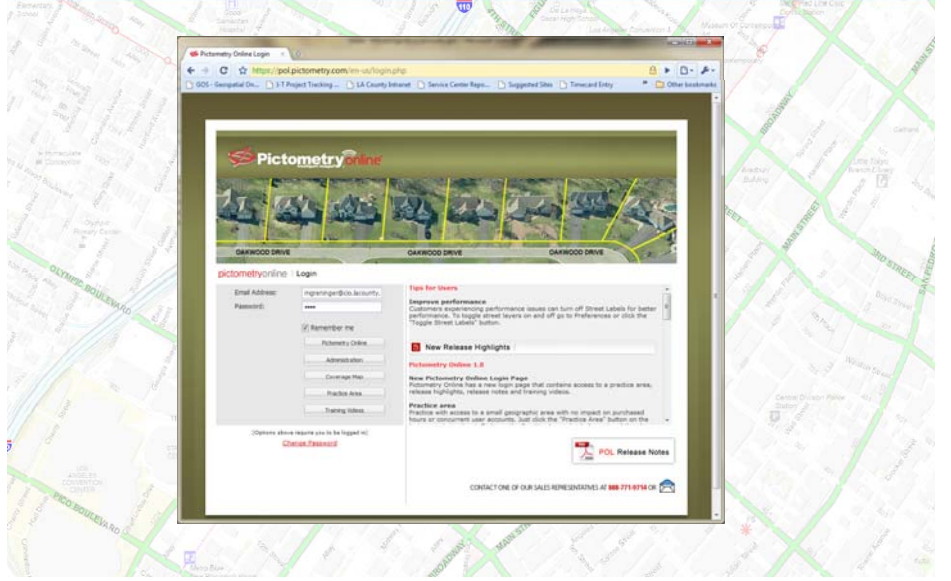
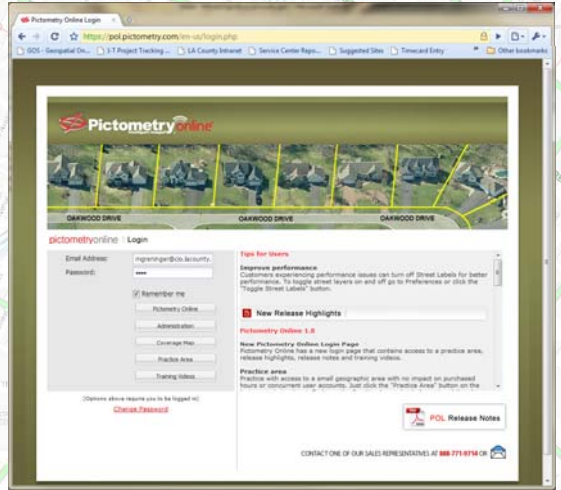
Pictometry iPhone/iPAD Application

- New access method
 - In your safari browser enter: <http://pol.pictometry.com/mobile>
 - Enter your standard POL login credentials.
 - Create a shortcut app icon. It's the Pictometry logo.



Los Angeles LAR-IAC3

Demonstration of Pictometry Online



Los Angeles Region – Imagery Acquisition Consortium (LAR-IAC3)

Questions/Comments? (time permitting)



Prepared by:
Los Angeles County

Contact Information

- Project Director**
 Mark Greninger, County GIO
mgreninger@cio.lacounty.gov (213) 253-5624
- Outreach Manager**
 Nick Franchino, GIS Manager, Regional Planning Dept.
nfranchino@planning.lacounty.gov (213) 893-0881

LAR-IAC Project Web Site

<http://planning.lacounty.gov/lariac>

LAR-IAC
Los Angeles Region Imagery Acquisition Consortium

Primary Navigation
[LAR-IAC3 \(Ref: 0\)](#)
[Background Information](#)
[Briefing - Meeting Schedule](#)
[Contact Information](#)
[Downloads](#)
[Licenses Related](#)
[Participants Related](#)
[Sample Imagery & Data](#)
[Pictometry Training Related](#)

LAR-IAC
[Archive](#)

Other Links
[LA County](#)
[Regional Planning \(LA County\)](#)
[Social GIS Forum](#)
[Vendor](#)

LAR-IAC2 Kickoff Meeting
 January 27, 2008

SAVE THE DATE!!
 We will be kicking off the LAR-IAC's project on Thursday, January 27, 2008 (time: 10 am - 12 noon, location: Health Services Headquarters). At this meeting, we will also briefly discuss the final status of the first project (including final reconciliation of costs and discussion of sub-licensing). Click [here](#) for more details.

LAR-IAC's Update...More to Come
 We are working hard to continue the momentum of the LAR-IAC and move to acquire updated imagery through [LAR-IACs](#). We will be acquiring new 4' color ortho imagery and new 4' color oblique imagery and related products.

Project Overview
 Welcome to the Los Angeles Region Imagery Acquisition Consortium (LAR-IAC) website. Here you will find documents relating to Los Angeles County's comprehensive project to obtain high-resolution digital imagery and related products. Please check this site periodically - we will be adding new material as it becomes available.